

A REQUEST FOR PROPOSAL FOR PROFESSIONAL SERVICES CONTRACT

Department of Highways
Professional Services Procurement Bulletin 2025-07
Jefferson | 5-560 | I-65

This document constitutes a Request for Proposals for a Professional Service Contract from qualified individuals and organizations to furnish those services as described herein for the Commonwealth of Kentucky, Department of Highways.

I. PROJECT DESCRIPTION

County -	Jefferson
Route -	I-65
Item No. -	5-560.00
Project Description -	Improve safety and reduce congestion at the I-65 / I-265 (Gene Snyder Freeway) interchange

II. PROJECT INFORMATION

Project Manager –	Tom Hall, P.E.
Central Office Liaison	Dave Heil, P.E.
User Division -	Planning
Approximate Fee -	\$350,000 Scoping Study (Lump Sum)
Project Funding -	Federal Funds (NH)
Project Length -	Approximately 1.2 miles (6.3 miles including ramps)

III. PURPOSE AND NEED

The objective of the I-65/I-265 Interchange Planning Study is to identify short- and long-term improvements to the interchange system that could reduce congestion and improve safety. The [2015 I-265 Programming Study](#) projected the I-265 westbound to I-65 northbound diverge as operating at a level of service (LOS) of F in both the AM and PM peaks in the year 2020. The study also identified the I-65 to I-265 eastbound merge as operating at a LOS of D in the AM and F in the PM peaks in the year 2020. In a comprehensive regional analysis conducted by the KIPDA MPO, the I-65/I-265 interchange was ranked as the 5th highest crash interchange in the Kentucky portion of the Metropolitan Planning Area (Bullitt, Jefferson, and Oldham Counties). Between 2019 and 2023 there were 280 total crashes including five fatal crashes and 40 suspected injury crashes. Most recent count data shows the average daily traffic entering this interchange is 207,645 vehicles per day. 2019-2023 LOSS KAB (Level of Service Safety, Fatal and Serious Injury Crashes) for I-65 mainline through the interchange area is 3, and the 2019-2023 LOSS KAB for I-265 mainline through the interchange is also 3.

Project Goals are to coordinate with upcoming adjacent improvement projects, increase safety for

all users, manage and reduce roadway congestion where appropriate, ensure timely and efficient movement of freight within, departing, and entering the region, and reduce and/or mitigate negative environmental impacts, including resiliency.

IV. DBE GOAL

The Consultant team shall include a DBE Participation Plan with their Response to Announcement to help the Department meet the 11.95% DBE goal established by FHWA. The plan should demonstrate how DBE companies will be mentored or used to assist in the area(s) pertaining to this contract. An additional page will be allowed in the Project Approach (Section 7) to exhibit this plan. A maximum of four (4) points will be considered in the Evaluation Factors for the DBE Participation Plan.

V. SCOPE OF WORK

The selected Consultant will be required to provide engineering services to:

- Draft purpose and need statement and identify project goals.
- Collect, summarize, and verify existing data to create an inventory of roadway items and possible geometric constraints.
- Gather and analyze crash (utilizing methodologies outlined in the Highway Safety Manual, KTC research, and KYTC's Data Drive Safety Analysis Implementation Plan) and origin-destination data.
- Provide traffic forecasts for the existing, future no-build, and build scenarios.
- Conduct public involvement activities including stakeholder involvement and both virtual and in-person public meetings.
- Develop Public Meeting Notebook.
- Identify short- and long-term improvements to the interchange (including TSMO strategies) and prioritize improvements using methodology consistent with SHIFT, including Benefit-Cost Analysis.
- Provide actionable planning-level cost and time estimates for all future phases (D,R,U,C) including potential sources of risk.
- Identify interchange improvement concepts that may need to be coordinated with adjacent interstate widening projects.
- Environmental overview.
- Submit a summary of findings in a Final Report.

None, some, or all identified concepts may be advanced by the Department to future phases including Preliminary Engineering and Environmental Analysis upon completion of the Planning phase and may be advanced to Final Design thereafter. If the project is advanced and if the selected Consultant is retained for any of these services, they may be asked to provide engineering services – including the preparation of any design studies, drainage design, right-of-way plans, construction plans, traffic control plans, and cost estimates as well as any other services that KYTC chooses not to perform with in-house forces, including possible Interchange Justification Reports.

VI. SPECIAL INSTRUCTIONS

The Department may retain any of the advertised services to be performed by in-house state forces.

Instructions for Response to Announcement can be found at:

<https://transportation.ky.gov/ProfessionalServices/Pages/Respond-to-an-Announcement.aspx>

VII. AVAILABLE STUDIES

[I-265 Programming Study](#)

[I-65 Conceptual Improvements Study](#)

VIII. METHOD OF DESIGN

The selected Consultant shall utilize the most recent CADD Standards for Highway Plans Policy in the development of the highway plans. Refer to the 2019 CADD Standards for ORD V4 Project Development Memo for information pertaining to the latest CADD Standards and plan submittal.

IX. ENVIRONMENTAL SERVICES

Any necessary Environmental Services will be provided by the Consultant. An Environmental Overview Report with a red flag summary may be required in the final report. Environmental services necessary for the completion of Preliminary Engineering or Final Design may be added by contract modification at the appropriate time. At any time, if the Department has the capacity to provide the services, the Department may retain the advertised environmental services. Prequalification in the area of Environmental Services is required to be identified in the Consultant's Response to Announcement. The overview may include: Terrestrial and Aquatic Assessment, Cultural Historic Literature Review and Reconnaissance, Underground Storage Tank (UST) & Hazardous Materials (HazMat) Overview, Socioeconomic Study (coordinated with KIPDA ADD/MPO), Noise & Air – brief identification of status of air (i.e. in attainment, known issues/concerns) and surrounding land use/potential sensitive receptors.

X. PHOTOGRAMMETRIC SERVICES

The Consultant will provide mapping and will furnish manuscripts in ORD format. Statewide Elevation data and Aerial photography can be found at the following link [KyFromAbove - Kentucky's Aerial Photography & Elevation Data Program](#). The selected Consultant shall supplement this information with conventional surveying as determined during project scoping.

XI. STRUCTURE DESIGN

Structure Design is not anticipated for the Planning Study. When the project advances to Preliminary and/or Final Design and if the selected Consultant is retained for Final Design services, the selected Consultant shall do the necessary engineering services to submit to the KYTC an Advanced Situation Folder(s) for the appropriate structure(s). The selected Consultant may be responsible for any necessary Structure Design services. Structure Design of the

proposed structure(s) may be added as a Contract Modification. Prequalification in the area of Structure Design is not required to be identified in the Consultant's Response to Announcement; however, the selected Consultant must obtain the required qualifications before providing these services or bring a prequalified subconsultant at that time.

XII. GEOTECHNICAL SERVICES

A Geotechnical Overview will be provided by the Consultant however the Department reserves the right to develop a Geotechnical Overview using state forces. A potential future Preliminary Design contract may include preliminary geotechnical services to review available geological, mining, or other geotechnical information that could influence the selection of the preferred alternate. Geotechnical services necessary for the completion of Final Design may be added by contract modification at the appropriate time. At any time, if the Department has the capacity to provide these services, the Department may retain the advertised geotechnical services. Prequalification in the area of Geotechnical Services is not required to be identified in the Consultant's Response to Announcement; however, the selected Consultant must obtain the required qualifications before providing these services or bring a prequalified subconsultant at that time.

XIII. TRAFFIC ENGINEERING

The Consultant is to gather existing 24-hour traffic counts with a minimum of 15-minute bins, to supplement the Department's available counts. The Consultant will provide the analysis of the existing and proposed operations. A 3-hour peak period is anticipated.

XIV. UTILITIES

The Consultant will be responsible for a planning level estimate of utility costs that will be reviewed by the Department for accuracy. The Department will send project location maps to all potential Jefferson County utility contacts to determine whether they may have existing utilities within these project limits. The Department will develop the utility contact list. Facility atlas maps received for this project will be provided to the selected Consultant. The Consultant will then add the approximate locations to the manuscripts.

The selected Consultant will identify existing utility facilities within the project area and complete or contribute to a utility conflict matrix, documenting those that may be negatively impacted by the project. The Consultant shall document the following for each utility in the conflict matrix: type of utility, owner of utility, quantify the extent they may be impacted, potential impacts to project budget, potential impact to project schedule, confidence of utility location depicted, and recommendations for remedy.

XV. PREQUALIFICATION REQUIREMENTS

To respond to this project the Consultant must be prequalified in the following areas by the response due date of this advertisement:

[ENVIRONMENTAL & UST SERVICES](#)

- UST & Hazmat Preliminary Site Assessment (Phase 1)

ENVIRONMENTAL AQUATIC & TERRESTRIAL ECOSYSTEMS ANALYSIS

- Fisheries
- Botany
- Terrestrial Zoology
- Wetlands
- Freshwater Macroinvertebrates
- Water Quality

ENVIRONMENTAL ARCHAEOLOGY & OTHER SERVICES

- Air Quality Analysis
- Prehistoric Archaeology
- Socio-Economic Analysis
- Highway Noise Analysis
- Historic Archaeology
- Environmental Document Writing & Coordination
- Cultural-Historic Analysis

INTELLIGENT TRANSPORTATION SYSTEMS

- System Design, Deployment & Integration

ROADWAY DESIGN

- Rural Roadway Design
- Advanced Traffic Engineering Design & Modeling
- Surveying
- Photogrammetry & Related Services
- Urban Roadway Design

TRAFFIC ENGINEERING

- Electrical Engineering Roadway Lighting
- Traffic Engineering

TRANSPORTATION PLANNING

- Traffic Forecasting
- Traffic Data Collection
- Advanced Transportation Planning Engineering
- Transportation Planning Engineering
- Travel Demand & Simulation Modeling
- Conceptual Transportation Planning

Geotechnical Services* (see note below)

- *Geotechnical Engineering**
- *Geotechnical Drilling**
- *Geotechnical Laboratory Testing**

Structure Design* (see note below)

- *Spans Under 500 Feet**

** Note – These prequalifications are not required with the initial proposal as it is uncertain to the extent practicable if they are necessary. Should these services become necessary during the delivery of the project in this or future phases, the selected Consultant team must obtain the required qualifications before providing those services or bring on a prequalified subconsultant at that time.*

XVI. PROCUREMENT SCHEDULE

Dates other than Response Date are tentative and provided for information only.

- Advertisement Date: January 14, 2025
- Response Date: February 5, 2025 by 4:30 PM ET (Frankfort Time)
- First Selection Meeting: February 10, 2025
- Final Selection: February 26, 2025
- Pre-Design Conference: March 5, 2025
- Consultant Fee Proposal: March 14, 2025
- Contract Negotiations: March 26, 2025
- Notice to Proceed: April 16, 2025

XVII. PROJECT SCHEDULE

- Existing Conditions Meeting: August 2025
- 1st Local Elected Officials/Stakeholders/Public Meeting: September 2025
- Initial Concepts Meeting: December 2025
- 2nd Local Elected Officials/Stakeholders/Public Meeting: January 2026
- Concept Selection/Prioritization Meeting: March 2026
- Submit Final Report: June 2026

XVIII. EVALUATION FACTORS

Consultants will be evaluated by the selection committee based on the following weighted factors:

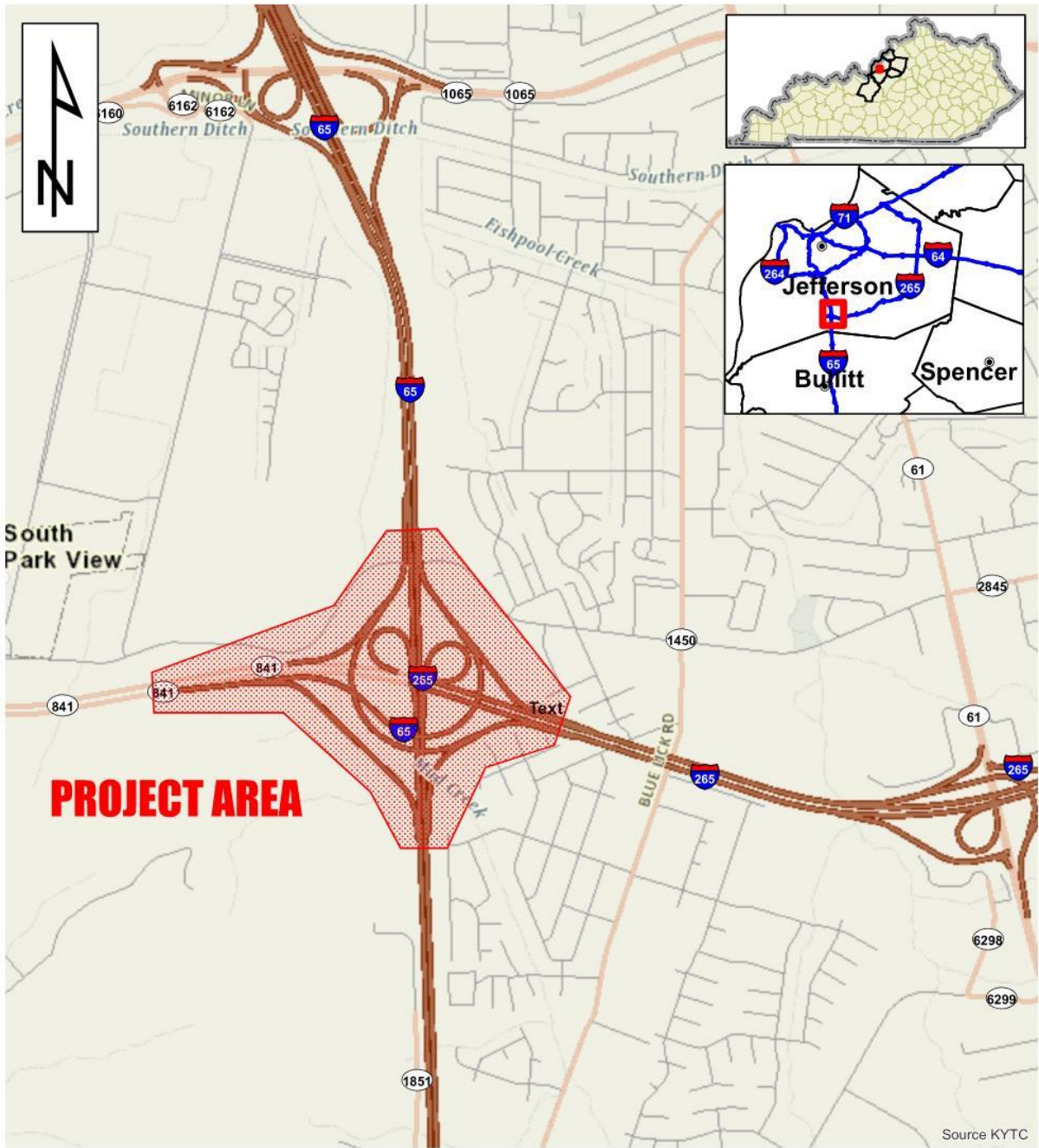
1. Project approach and proposed procedures to accomplish the services for the project. (20 Points)
2. Relative experience of consultant personnel assigned to project team with highway project for KYTC and/or federal, local or other state governmental agencies. (15 Points)
3. Past record of performance on projects similar in type and complexity. (15 Points)
4. Capacity to comply with project schedule. (10 Points)
5. The Consultant demonstrates a comprehensive understanding of safety strategies and the ability to generate meaningful ideas that can measurably enhance the safety of the completed project. This includes both the immediate effectiveness and the long-term safety impacts of the finished facility. (5 Points)
6. DBE Participation Plan (4 Points)
7. Knowledge of the locality and familiarity of general geographic area. (2 Points)

XIX. SELECTION COMMITTEE MEMBERS

1. Tom Hall, P.E., User Division

2. Stephen De Witte , P.E., User Division
3. Amanda Desmond, P.E., Secretary's Pool
4. Matthew Sipes, P.E., Secretary's Pool
5. Brian Wood, P.E., Governor's Pool

XX. AREA MAP



PS Professional Services

TEAM KENTUCKY
TRANSPORTATION CABINET

**Jefferson County
Item No. 5-560.00
I-65 / I-265**

Disclaimer: KYTC provides this map as a reference only. Users are to validate information independently. Copyright: 2024 Kentucky Transportation Cabinet. All rights reserved.

Date: 12/23/2024